

MEA60-200-30-PtBlack

Product type

Micro-Electrode Array Biochip compatible with the data acquisition systems from Multi Channel Systems MCS GmbH, Reutlingen, Germany.

Characteristics

Substrate dimension: 12mm x 12mm x 0.7mm
Substrate material: Glass
Electrode material: Platinum black
Insulation material: SU-8 epoxy, thickness 5 μ m
Working Temperature: 10°C - 70°C

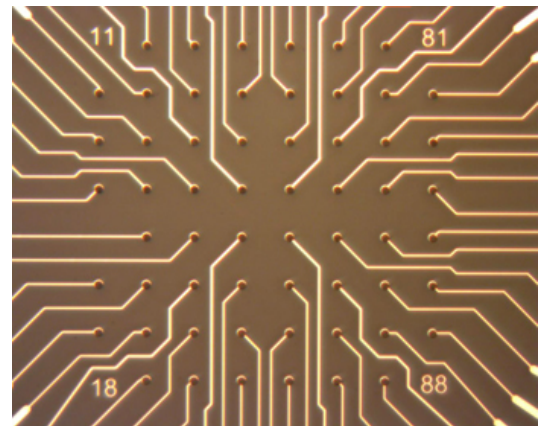
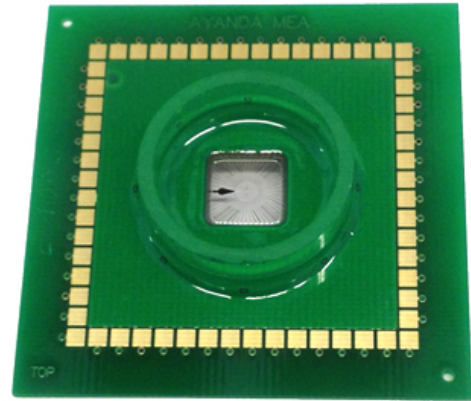
Electrode geometry: Planar

Recording electrodes: 59
Reference electrode: One internal reference (N°15)

Electrode layout: 8x8 matrix
Electrodes dimension: $\varnothing 30\mu$ m
Interelectrode distance: 200 μ m (centre to centre)
Impedance (@1kHz): 20-30k Ω

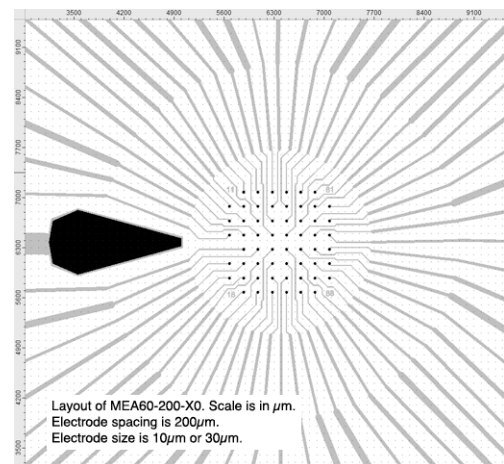
Culture chamber: Glass ring
External $\varnothing 24$ mm, height 6mm

Required accessory: MEA60-Spacer



Applications

Dissociated cell cultures (brain tissue, spinal cord, retina, heart muscle cells, etc.)



Product information is subject to change without notice

© 2020, MicroElectrodeDevices