

# MEA60-100-30-Pt

## Product type

Micro-Electrode Array Biochip compatible with the data acquisition systems from Multi Channel Systems MCS GmbH, Reutlingen, Germany.

## Characteristics

Substrate dimension: 12mm x 12mm x 0.7mm  
Substrate material: Glass  
Electrode material: Platinum  
Insulation material: SU-8 epoxy, thickness 5 $\mu$ m  
Working Temperature: 10°C - 70°C

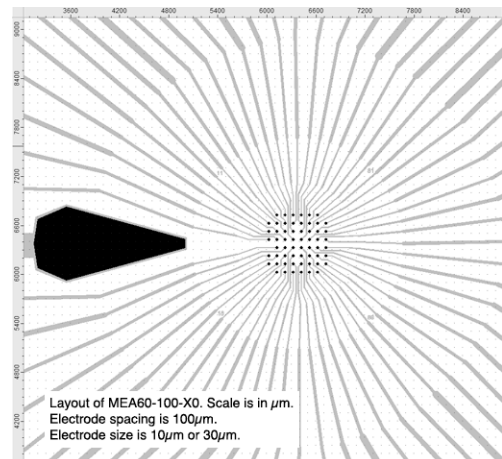
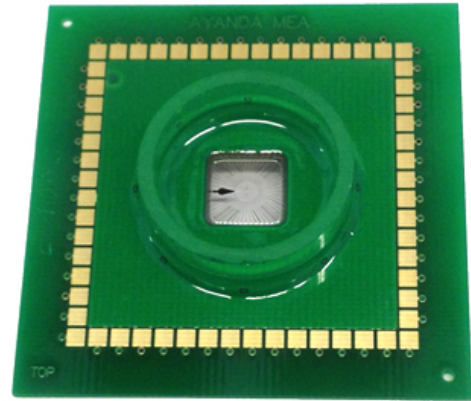
Electrode geometry: Planar

Recording electrodes: 59  
Reference electrode: One internal reference (N°15)

Electrode layout: 8x8 matrix  
Electrodes dimension:  $\varnothing$ 30 $\mu$ m  
Interelectrode distance: 100 $\mu$ m (centre to centre)  
Impedance (@1kHz): 800-1100k $\Omega$

Culture chamber: Glass ring  
External  $\varnothing$ 24mm, height 6mm

Required accessory: MEA60-Spacer



## Applications

Dissociated cell cultures (brain tissue, spinal cord, retina, heart muscle cells, etc.)

Product information is subject to change without notice

© 2020, MicroElectrodeDevices